



summer 2011

chamber

CONNECTION

inside:

Chamber of Commerce

Experience China in 2012
Page 12

Economic Development

Economic Activity Highlights
Page 8

Convention & Visitors Bureau

ABA BMX Tar Heel Nationals
Page 4

Boosting the Local Economy

A publication of the **Alamance County Area Chamber of Commerce**



PRINTED ON RECYCLED PAPER



letter from the president



Mac Williams
Chamber President

Economic development is the key function of the chamber. Everything the organization does is intended to impact, at some level, advancing the economic growth of our members and our community.

As you read through this issue, you can see numerous examples of our focus on economic development from each of the chamber's functional areas. The cover picture highlights an example of the economic development work of the Convention and Visitors Bureau, which along with the City of Burlington and other partners, is hosting a BMX cycling event in the county in July which will bring in several hundred people for a couple of days. Those good folks will provide an economic boost to our community with spending in hotels, restaurants, retailers and other venues. Plus, successful events such as this give our community a "good name" which helps when marketing Alamance County and its many assets for other events.

The recent announcement by Kidde, Samet, and New Breed Logistics of their new facility to be constructed in the NCIC park in Mebane highlights success in the more traditional economic development arena. Like the BMX event from the CVB area, the Kidde announcement from the traditional economic development area also represents an economic boost in the form of new jobs and tax base; and, like the BMX event, good project announcements help in marketing the area to other prospects as it sends the message that Alamance County is a good place to do business. And speaking of marketing, chamber staff has recently had two opportunities for face-to-face meetings with the Raleigh-based development staff of the NC Department of Commerce. These folks receive and service the inquiries from companies interested in locating facilities in the state, and they need to be familiar with Alamance County. In both meetings, one in Raleigh and one in Alamance County, chamber staff touted the many attributes of an Alamance County location.

The chamber functions to help our members with their individual business development. Networking events, educational programs, workforce and leadership programs, ribbon cuttings, etc. are all offered to give members enhanced exposure to other local businesses and the larger community.

Looking ahead, websites are a key component in the operations of all three function areas and we will be making improvements in the coming months to all three websites. In addition, the Economic Development Foundation, a key chamber partner, will be undertaking a major fundraising campaign to help resource traditional economic development efforts for the next five years.

A common thread among all these chamber functions and initiatives is you, the individual member. Without your financial and volunteer support, none of these efforts and successes could happen.

2011 BOARD OF DIRECTORS & OFFICERS

Jeffrey Andrews Vernon Vernon Wooten Brown Andrews Garrett, P.A.	Bob Lewis-Vice Chair NAI Piedmont Triad
Milele Archibald-Vice Chair ACC Small Business Center	Cindy Montgomery-Vice Chair Gregory Grier Professional Office Furnishings
Hal Bates Glen Raven, Inc.	Ken Morrison Morrison Video Productions, LLC
Tony Brandewie Honda Aero, Inc.	Randy Perkins-Chair Elect Prime Personnel Resources
Walter Britt Alamance County Community YMCA	John Peterson The Peterson Agency
Randy Cox The Village Grill	Dr. Sam Powell Powell Enterprises
John Currin-Chair Alamance Regional Medical Center	Tony Roper Alamance County Community Services Agency
Pam Duffy Wishart Norris Henninger & Pittman P.A.	Kelly Shirley Dick Shirley Automotive
Susan Ezekiel Cobb Ezekiel Loy & Co., PA	Marty Stadler Proponent Federal Credit Union
Dick Fisher Fisher Wealth Management	Keith Strickland- Vice Chair Carolina Bank
Bill Gomory-Past Chair BB&T	Mac Williams Alamance County Area Chamber of Commerce
Dr. Mary Gowan-Vice Chair Elon University	
Brad Hayes LabCorp	
Mitch King-Treasurer STOUT STUART McGOWEN & KING LLP	
Eric Henry TS Designs Inc.	

CHAMBER OF COMMERCE | Staff

Mac Williams President	Andrea Fleming Economic Development Associate
Barbara Massey Vice President Workforce/Leadership Development	Lisa Foster Office Manager/ Bookkeeper
Blair Wilburn Vice President Membership Development	Hope Shirley Program Assistant
Mary Lou Bacchus Membership Sales Representative	Melissa Oakes Membership Assistant

CONVENTION & VISITORS BUREAU | Staff

Robert Cox Vice President	Amy Love Administrative Assistant/ Visitor Services
Amanda Burgess Sales/Marketing Coordinator	



2011 Chamber Sponsors

Chamber Champions |



WISHART NORRIS HENNINGER & PITTMAN P.A.
ATTORNEYS AND COUNSELORS AT LAW

Chamber Partners

BB&T | Duke Energy | Glen Raven, Inc.
Manpower | MidCarolina Bank
PIP Printing and Marketing Services
VantageSouth Bank

Chamber Advocates

Alamance County Community YMCA
Burlington Pediatrics, PA | Carolina Bank
LabCorp | Piedmont Natural Gas
Randolph Bank | SunTrust
The Village at Brookwood

contents...

 2 President's Message	 10 New Members
 4 Convention & Visitors Bureau	 11 Ribbon Cuttings
 6 Workforce & Leadership Development	 12 Marketing & Membership
 8 Economic Development	 14 Member Discounts
 9 Members in the News	 15 Calendar of Events



convention & visitors BUREAU

Did you know?

Did you know that, as of May 2010, three Alamance County cities have been recognized as a Tree City USA Community by the Arbor Day Foundation? Elon has been given the honor for 3 years, Burlington for 16 years and Graham has been a Tree City Community for 29 years! To qualify as a Tree City USA community, a town or city must meet the four standards established by The Arbor Day Foundation and the National Association of State Foresters to ensure that every qualifying community would have a viable tree management plan and program. The four standards are that each city have a tree board or department, a tree care ordinance, a community forestry program (with an annual budget of at least \$2 per capita) and an Arbor Day Observance and Proclamation.

For more information visit www.arborday.org/TreeCityUS.

**CVB Celebrates National Tourism Week**

The CVB recently celebrated National Tourism Week. The first full week of May is annually recognized as National Travel and Tourism Week, a tradition first celebrated in 1984. It was established when the U.S. Congress passed a joint resolution in 1983 designating the week to be celebrated in May. Here locally we "Thank" those in the Hospitality Industry with custom made "Thank You" gifts that celebrate life in Alamance County.

Summer Fun Guide

The CVB was recently featured in WFMY's Channel 2 Summer Fun Guide. Here we highlighted several of our wonderful attractions including Burlington City Park, the Civil War Trail, the Haw River Trail and the Haw River Wine Trail. This was an excellent opportunity to reach the "drive" market tourist, or day-trippers, that are so important to North Carolina. The CVB's new website will feature this segment in the near future.

Going Places

April had the CVB traveling down the road a little to the 2011 National Association of Sports Commissions Symposium in Greensboro, NC. The CVB held appointment sessions with several Sporting Event Coordinators in hopes of bringing new events to the Alamance County area as well as welcoming back those that have been seen several years in the past. The CVB also traveled to Baltimore, MD for the Destination Marketing International's Visitor Services Shirtsleeves, where they were able to share ideas and best practices with over 25 Visitor Service Managers on ways to effectively operate a Visitor Service Center.

Open & Closed**Anna's Thai Sushi - New Location**

2455 S. Church St., Burlington
(336)226-4030

Monday-Thursday: 11:30am-2:30pm,
5-9:30pm; Friday-Saturday: 11:30am-2pm,
5-10:30pm; Sunday: 11:30am-2:30pm;
5-9pm

Cancun Mexican Restaurant

3153 Garden Rd., Burlington
(336)584-4494

Sunday-Thursday: 11am-10pm
Friday- Saturday: 11am-11pm

Restaurant at the Park (new location and name for Glen Raven Grill)

1610 S. Church St., Burlington
(336)513-4015

Monday-Thursday: 11am-9:30pm
Friday-Saturday: 11am-10:30pm

Front Street Public House

107 E. Front St., Burlington; (336)694-5997
Monday-Sunday: 3pm-2am

Fisherman's Cove

414 W. Center St., Mebane; (919)304-5178

Tuesday-Thursday: 11am-9pm

Friday: 11am-9:30pm

Saturday: 11am-9pm

Sunday: Noon-8:30pm

Gourmet 52

309 Huffman Mill Rd., Burlington;
(336)270-4834

Monday-Saturday: 11am-10pm

Jazebel's Jazz Bistro

3281 S. Church St., Burlington
(336)270-6277

Monday: 11am-3pm

Tuesday-Saturday: 11am-3pm, 5-10pm

Sunday: Noon-3pm, 5-9pm

Local Yogurt

116 W. Lebanon Ave., Elon; (336)586-1775

Monday-Thursday: 11am-10pm

Friday-Saturday: 11am-11pm

Sunday: Noon-9pm

Mar Y Sol Mexican Restaurant

579 Huffman Mill Rd., Burlington
(336)538-1023

Monday-Sunday: 10am-11pm

Open & Closed

Saxapahaw Co-op Art Gallery

1610 Jordan Dr., Saxapahaw
 (336)693-4606
 Friday: Noon-8pm
 Saturday: 11am-8pm; Sunday: 1-5pm

The Point of View Art Gallery

717 Chapel Hill Rd., Burlington
 (336)270-4998
 Monday-Friday: 10am-5pm
 Sunday: 10am-4pm

Closed:

Main Event Restaurant
 Namaste Indian Restaurant
 Country Elegance Buffet
 Ye Old Country Kitchen (inside
 Quality Inn)



Upcoming Events

ACE Speedway

Races every Friday night
 Pits open at 4:30pm; Gates at 5:30pm

Burlington Royals Home Games at Burlington Athletic Stadium

June 19, 27-29
 July 4-10, 15-17, 24-26, 29
 August 3-8
 Game times vary with special events.

Sword of Peace Outdoor Drama

July 7, 9, 15, 21, 23, 29; August 4, 6, 12
 Showtime: 8pm

Pathway to Freedom Outdoor Drama

July 8, 14, 16, 22, 28, 30; August 5, 11, 13
 Showtime: 8pm

Aladdin Children's Outdoor Theater

July 13, 23, 27; August 6, 10
 Saturday 10am; Wednesday 7:30pm

Little Red and the Riding Hoods Children's Outdoor Theater

July 1, 20, 30; August 3, 13
 Saturday 10am; Wednesday 7:30pm

Singin' in the Rain Outdoor Drama

August 16-20
 8pm

For additional events and details:
www.visitalamance.com for full details.

ABA BMX Tar Heel Nationals

What began as a dream of the local Burlington BMX Parents Association will come full circle later this summer when the Tar Heel Nationals come to Burlington. The CVB, along with Burlington BMX and Burlington Recreation & Parks, will welcome 700-800 riders to the Tar Heel Nationals to be held at the BMX track at Fairchild Community Center July 22-24, 2011. This will be the first time in over 10 years that Burlington has hosted a National BMX event. Brad Kincheloe with Burlington BMX says "BBMX is proud to host the 2011 Tarheel Nationals. The national event will give our local riders the opportunity to compete against riders from all across the United States. It will also introduce the sport to kids and adults who have never been out to the track to see a BMX race."

In order to secure this event, a bid was submitted by the three organizations outlining different aspects of the event and things that the local organizing committee would be responsible for and other areas that the ABA BMX would control. This bid was submitted over a year in advance, with notification that Burlington had received the event coming in the fall of 2010. The CVB expects this to be one of the largest events held in the area in quite some time with nine different hotels being used for overnight accommodations, not to mention the impact that the riders and traveling parties will have on local eateries, gas stations, etc. An economic impact report with estimates of total impact will be conducted in the weeks following the event. The three organizations also recently submitted a bid to host this same event in 2012, with notification of the winning bid to come later this summer.

workforce & leadership DEVELOPMENT

Leadership in Action By Anne Morris, Executive Director, Burlington Downtown Corporation

Opening the new Allied Churches Resource Center adjacent to the newly relocated Drop-In Center on Rauhut Street is an exciting step for Allied Churches staff and the population they serve. A group of Leadership Alamance participants took on the task of transforming the space from a laundromat to a functioning center, but it took the generosity of many more business and community participants to make it happen within a matter of weeks.

The new Resource Center will provide convenient access to needed services, included job training, access to health care, case management, referral to housing support and access to a local community college for the area's homeless population and others needing help in this difficult economy. Four members of the 2010-2011 Leadership Alamance Class worked with Allied Churches of Alamance County, Inc. as part of their participation in the program.

Leadership Alamance participants Anne Morris, Brendan Fitzpatrick, Reed LaPlante, and Reagan Chandler-Gural worked with Allied Churches staff and board members to determine the needs and resources necessary to transform a former laundromat into a place where service providers can assist clients in one convenient location. They harnessed both manpower and community connections to paint the interior of the space and locate, transport and assemble six work stations, within a matter of days. Other donations of office equipment will help make the space functional.

"Through the generosity of our business community, we were able to successfully outfit this great, new community space," says H. E. "Hunter" Thompson, Executive Director of Allied Churches of Alamance County, Inc. "It's our hope that the new Resources Center will provide users with the necessary tools and services to help with job searching, community aid, and personal development."

Donations of materials and resources were received from Alamance Regional Medical Center, TS Designs, Home Depot, Kappa Sigma Fraternity as well as shelter guests. Without these donations, the project could not have been completed so quickly.

According to Barbara Massey, Vice President of Workforce and Leadership Development, "Working with a local nonprofit to execute a project is a requirement for each class member. This is a great example of our project goal of identifying and using local resources to improve our community. Other class members had the opportunity to work with Special Olympics, Ralph Scott Life Services and Meals on Wheels. This is just one of the components that make Leadership Alamance a powerful leadership program."

**Leadership Alamance
Graduates its 21st Class****Congratulations to the graduating members of
Leadership Alamance Class of 2011**

Arasi Adkins - Alamance-Burlington School System

James Amidon - Capital Bank

Rachelle Bryant - Gilliam, Coble & Moser

Lisa Banks - Proponent Federal Credit Union

Reagan Chandler Gural - MidCarolina Bank

Aaron Davis - City of Graham Recreation and Parks

JJ Evans - Alamance Community College

Willy Fisher - Fisher Wealth Management

Brendan Fitzpatrick - Alamance Regional
Medical Center

Ross Gravely - Stout Stuart McGowen & King LLP

Reed LaPlante - SunTrust Bank

Brendle Leggett - Prime Personnel Resources

Brian Long - Burlington Police Department

Kathy Maines - Twin Lakes Community

Eric Miedema - Hospice of Alamance/Caswell

Tammy Minnis - Alamance County Department of
Social Services

Anne Morris - Burlington Downtown Corporation

Alison Morrison-Shetlar - Elon University

Billy Pennington - Pennington Promotional Products

Joanne Pizzuto - Brookdale Senior Living/Burlington
Manor

Cathy Proffitt - LabCorp

Nikki Ratliff - Burlington Development Corporation

Stuart Sioussat - VantageSouth Bank

Cara Sweat - Carolina Bank

Marissa West - Vernon Law Firm

Mary Wilson - Alamance County Y

Katie Wright - United Way of Alamance County



*Accounting • Tax Planning & Preparation • Auditing
Advisors To Management
Litigation Service • Employee Benefit Plan Services*

**STOUT
STUART
McGOWEN
& KING LLP**



*Certified
Public
Accountants*

*Management
Advisors to*

1233 South Church Street
Burlington, NC 27215

336-226-7343
fax: 336-229-4204
www.ssmkllp.com
email: ssmk@smkllp.com

Every business has a path to success.

At Wishart Norris Henninger & Pittman,
we don't have appointments with our clients;
we have ongoing relationships
forged through expertise and collaboration,
and by opportunities and challenges.
The true test of our merit lies in the years and decades
that our clients spend with us.
It is the journey we travel together - the journey we welcome.

See some of the roads we've traveled,
walking in our clients' shoes at

www.wnhplaw.com



3120 S. Church Street, Burlington, NC 27216
336.584.3388 • www.wnhplaw.com



**We're not
just in your
neighborhood.
We're in
your corner.**

wachovia.com

Wachovia Bank and Wachovia Bank of Delaware are divisions
of Wells Fargo Bank, N.A. Member FDIC.
© 2011 Wells Fargo Bank, N.A. All rights reserved. ECG-439600



- ◆ Temp to Hire
- ◆ Temp Positions
- ◆ Professional Placement
- ◆ On-site Management

PROFESSIONAL

- ◆ Management/Sales
- ◆ Engineering
- ◆ Information Systems
- ◆ Accounting/Financial
- ◆ Medical

OFFICE SUPPORT

- ◆ Administrative
- ◆ Bookkeeping
- ◆ Customer Service
- ◆ Data/Word Processing
- ◆ Receptionist/Secretary

INDUSTRIAL / MANUFACTURING

Prime Personnel Resources, Inc.
2640 Ramada Rd, in I-85 Plaza
Burlington, NC 27215
Phone: 336-226-5100
Fax: 336-226-5902
www.primepersonnelresources.com



Randy Perkins
Owner

economic DEVELOPMENT



NC Department of Commerce

The North Carolina Department of Commerce Business & Industry Division is the key source of project leads for Alamance County; during 2010, NCDOC accounted for almost 50% of inquiries. Part of the chamber's economic development marketing strategy is to enhance our relationship with the NCDOC developers and keep them informed of developments, properties and business news for Alamance County.

On May 9, Mac Williams, president, and Andrea Fleming, economic development associate, traveled to Raleigh to make a presentation to the developers about Alamance County, and then networked with the staff over lunch. As a follow-up to the presentation, we are hosting the developers for a full day in June to see in person several of the industrial properties and amenities highlighted in May. This visit is a unique opportunity as there are 100 counties in the state; we look forward to highlighting the assets of Alamance County.

Economic Development Activity Highlights

- 17 project inquiries in 2011-to-date
- Attended the Piedmont Triad Partnership's broker luncheons in Charlotte and the Triad, and their reception for the NC Department of Commerce in Raleigh.
- Traveled to Atlanta with the Piedmont Triad Partnership to meet with site location consultants and regional real estate brokers.
- Sponsored and attended the Alamance County Human Resources Association Safety Awards.
- Presented at the Realtor's Commercial Alliance meeting with a focus on the NC Economic Development Intelligence System and property database.

Kidde Residential Expanding in Mebane

Kidde Residential & Commercial, the leading manufacturer of residential fire safety products, hosted a celebration to break ground on their new facility in Mebane in April. The new facility will be a collaborative effort between Kidde, New Breed Logistics and Samet Corporation. The new, 244,000-square-foot building will be located across the street from Kidde's current business headquarters. It will be a state-of-the-art facility which will consolidate warehousing and distribution functions and enable the company to streamline its packaging and shipping.

"Kidde is a top-rate company that has been in Mebane and Alamance County for over 40 years. They were the first company to locate in the NC Industrial Center and we're thrilled that they chose to expand their operations locally," stated Mac Williams, president of the Alamance County Area Chamber of Commerce.

Samet Corporation will oversee the construction of the building and lease back to Kidde. New Breed Logistics has entered a contract to design and implement the new packaging operation and operate and manage the new center. New Breed plans to add between 50 and 60 employees for the facility.

The building is expected to be complete by the end of 2011.

For more information on Economic Development and data on Alamance County, see www.choosealamancenc.com.

members

in the NEWS

Davenport, Marvin, Joyce & Co., LLP (DMJ), Greensboro accounting and consulting firm, celebrated its 11th consecutive year plunging for Special Olympics North Carolina, raising more than \$12,075.

Carolina Foundation Solutions, LLC based in Burlington has been awarded the Helical Pile Association 2010 Star Award "A Recognition of Excellence" Gold Level. The award is based upon Business Excellence, Marketing Excellence, Operations Efficiency, Sales Growth, and Innovation. Carolina Foundation Solutions, LLC was also awarded the Dealer of the Year for the Southeastern US and Caribbean by AB Chance.

Peggie Foster, Sales Manager and Lyle Wiley, Co-Owner of **Abbey Glen** recently attended the Epcon National Sales Conference in Columbus, Ohio. Peggie was inducted into Epcon's President's Club. She was one of three agents in the nation to exceed the required sales to obtain the honor. Lyle was honored by being asked to serve on Epcon's National Marketing Co-Op Board. Abbey Glen also moved to #2 in the nation for sales of Epcon Condominium Homes, and #1 in North Carolina.

Keller Williams Realty is pleased to welcome several new agents: Melissa White, Sherri Osborne, Rhonda McLean and Cathy Cagno.

Carter W. Leinster, CFP®, ChFC®, CLU, and President of **Triad Financial Advisors**, is listed in Barron's Special Report of Top 1,000 Advisors State by State for the third consecutive year. She also ranked as one of the Top 25 North Carolina Financial Advisors. The three major components Barron's uses to rank Advisors are assets managed, revenue produced and quality of practice.

The Burlington, NC **Two Men and Truck®** franchise was recently recognized as a top performer for 2010. It ranked No. 6 out of more than 200 locations across the United States. Franchises are judged annually based on a scorecard system that measures excellence in customer service, operations, education, citizenship and community involvement. The Burlington franchise location currently operates 14 trucks and has 35 employees.

Beco Inc., one of North Carolina's most trusted electrical contracting companies, teamed up recently with Purple Heart Homes, an organization committed to finding quality of life solutions for American Veterans, to make one war veteran's life less difficult and a whole lot

brighter. The company acquired the necessary permits to provide the electrical revisions and additions, worked with their suppliers and contacts to provide the needed materials, as well as their team members pitching in and donating their time.

Judy Brumley, a salesperson and co-owner of **PIP Printing and Marketing Services** in Burlington has been recognized as a 2010 Gold Level Top Performer, presented annually to recognize top achievers in the PIP franchise network. Also from PIP Printing and Marketing Services, Lee Whitaker received the 2010 Don F. Lowe Salesperson of the Year. The recipient of this award is selected because of his demonstration of professionalism in his work; support of the Franchise Services Inc. Salesperson Program and participation in corporate events; because he serves customers in such a way as to bring credit to the franchises and the PIP brand; and because he contributes to the success of others in the Franchise Services Inc. network.

Gail Moore, of **Home Instead Senior Care**, recently attended the International Convention in Omaha, Nebraska for Home Instead. Moore was presented with the Presidential II award for Service and Dedication. She accepted the award on behalf of the wonderful, dedicated caregivers and office staff.

For a dozen years, *The Business Journal* has celebrated outstanding women leaders through its Women in Business program. The impact these women are having across a broad array of economic sectors is inspiring. Cindy Montgomery, district sales manager at **Gregory Grier Professional Office Furnishings**, established the Burlington site of Gregory Grier Professional Office Furnishings in 2005 and virtually doubled sales in 2006 and again in 2007. Despite the recession, Cindy increased sales by 46% in 2010, all the while remaining a civic champion and serving on boards and leading key fundraising initiatives for several organizations in Alamance County, including the Arts Council, United Way, Women's Resource Center, and Chamber of Commerce. Sue Rich, Corporate Vice President, Trade Show and Events Manager at **Glen Raven, Inc.**, was named Glen Raven's first female corporate vice president in 1999, and during her 18 years has held a number of different positions there. Most recently, Sue spearheaded a global innovations initiative spanning the company's 30 locations around the world. Civically, she has twice chaired the board of the Alamance Partnership for Children, serves on a community services task force and sits on the ACC Foundation Board.

new MEMBERS

AddieRae & Ives

Lorene Bingenheimer
2306 S. Church St.
Burlington, NC 27215
(336)228-7242
Retail - Bridal Registry, Fine
Gifts

Alamance County HR Association (ACHRA)

Cheryl Ray
PO Box 433
Burlington, NC 27216
(919)640-6269
Non-Profit/Community
Service

Blessed Sacrament School

Salvatore Trento
515 Hillcrest Ave.
Burlington, NC 27215
(336)570-0019
www.bssknights.org
Education - Private

Blue Ridge Environmental Defense League

Beverly Kerr
4772 S. NC Hwy. 49
Graham, NC 27253
(336)376-9060
www.bredl.org
Non-Profit/Community
Service

Building the Dragon

Derrick Dill
5220 S. NC Hwy. 49
Burlington, NC 27215
(843)814-2197
building-the-dragon.com
Health & Fitness

Cancun Restaurant

Salvador Ruiz
3153 Garden Rd., Ste. 14
Burlington, NC 27215
(336)584-4494
Restaurant/Food &
Beverage

Carden Place Apartments

Betsy Jenswold
Katherine Barbee
101 Carden Place Dr.
Mebane, NC 27302
(919)568-8682
www.cardenplace.com
Apartments

Cloud Nine Vending

Jeremiah Dickson
304 W. Elm St.
Graham, NC 27253
(336)516-3588
cloudninevending.com
Office Services

Coffee News

Brian Tipton
621 Middle Bridge
Wake Forest, NC 27587
(919)229-9788
www.coffeenewsnc.com
Advertising - Marketing
Services

Conservator's Center

Mindy Stinner
Julia Matson
676 E. Hughes Mill Rd.
Burlington, NC 27217
(336)421-0065
conservatorscenter.org
Non-Profit/Community
Service

D.S.N. Consultants

Samuel Doncel
2465 Carolina Rd.
Burlington, NC 27215
(336)524-1080
Interpreting/Translation
Services

Dave's Discount Decorators Warehouse

David Morton
309 Huffman Mill Rd.
Burlington, NC 27215
(336)227-4880
Furniture

Gourmet 52

Georgio & Diane Harvalias
309 Huffman Mill Rd.
Ste. 580
Burlington, NC 27215
(336)270-4834
www.gourmet52nc.com
Restaurant/Food & Beverage

Hearst Corporation/Local Edge

Amy Elliott
5055 Barrow Rd.
Kernersville, NC 27284
(336)345-4680
www.localgedgemedial.com
Advertising - Marketing
Services

Integrative Family Dentistry

Dr. Ralph Mensah
Dr. Jacqueline Garner
1931 S. NC Hwy. 119
Mebane, NC 27302
(919)304-3014
www.integrativefamilyden-
tistry.com
Healthcare

Keller Williams

Melissa McCauley
2280 S. Church St.
Ste. 206
Burlington, NC 27215
(336)260-8475
www.mccauleyhomes.com
Real Estate

Local Yogurt

Leah Bergman
116 W. Lebanon Ave.
Elon, NC 27244
(917)714-9601
www.localyogurt.com
Restaurant/Food &
Beverage

Lowe's Home Improvement - Mebane

Jason Clodfelter
200 Lowe's Blvd.
Mebane, NC 27302
(919)304-9401
www.lowes.com
Retail - Home Improvement

Rainbow International Restoration & Cleaning

Tammy Kimble
1808 Anthony Rd.
Ste. 103
Burlington, NC 27215
(336)570-0544
www.rainbowintl.com/ala-
mancecounty
Cleaning - Carpet

Saint Jacques at Burke Manor Inn

Lil & Lori Lacassagne
303 Burke St.
Gibsonville, NC 27249
(336)449-6266
www.burkemanor.com
Event Planning

Sav-A-Lot Burlington

Rick Barrientos
2139 N. Church St.
Burlington, NC 27217
(336)226-4319
www.savergroup.com
Grocer

Sentury Staffing

Michelle Brown
4217 S. Church St.
Burlington, NC 27217
(919)457-0379
www.senturystaffing.com
Employment Services

Southpoint Painting

Keith Williams
3011 Amherst Ave.
Burlington, NC 27215
(919)200-3965
southpointpainting.com
Construction - Painting

Stone Circles at The Stone House

Claudia Horwitz
6602 Nicks Rd.
Mebane, NC 27302
(919)225-8399
www.stonecircles.org
Non-Profit/Community
Service

Triangle Grading & Paving

Gary Shafer
James Kirkpatrick
PO Box 2570
Burlington, NC 27216
(336)584-1745
www.trianglegrading-
paving.com

Triangle Implant Center

Allie Littell
1107 S. Fifth St.
Ste. 250
Mebane, NC 27302
(919)237-9400
www.triangleimplantcen-
ter.com
Healthcare - Specialists

Verizon Wireless

Eric Hines
1565 Glidewell Dr., Ste. 101
Burlington, NC 27215
(336)585-0034
www.verizonwireless.com
Cellular Communications

Woodforest National Bank

Shawn Baker
3141 Garden Rd.
Burlington, NC 27215
(336)524-9810
www.woodforest.com
Financial - Banks, Credits,
S&L



Ribbon Cuttings



1

2

3



4

5

6

- 1. Elon Town Center Groundbreaking
- 2. Juliepatoolie's

- 3. Sav-A-Lot Burlington
- 4. Integrative Family Dentistry

- 5. Sylvan Learning Center
- 6. Arcadia Healthcare

The chamber partners with *Alamance Magazine* to bring you Ribbon Cutting announcements. The pictured ribbon cuttings were celebrated between March and May 2011.



Experience • Commitment • Results
Established 1933

Call 336.227.8851 or visit our website:
www.vernonlaw.com

**Vernon, Vernon, Wooten, Brown,
Andrews & Garrett, P.A.**

522 South Lexington Avenue
Burlington, NC 27215

INSPIRING CARE FOR LIFE

Quality care, highly-skilled physicians and some of the most advanced life-saving technology in the region – it's right here, close to home. Alamance Regional Medical Center. Inspiring Care for Life.



cancer heart imaging women's care orthopedics



marketing and membership

Experience China in 2012

Next March, the Alamance County Area Chamber of Commerce will host a memorable 9-day journey to China for members and guests. This will be a cost-effective opportunity for Alamance County's business community to become familiar with some of the leading cities in China and to experience the centuries-old customs and history. Join the chamber to witness first-hand China's rapidly changing economy and their expanding role in the global marketplace.

The Itinerary:

Day 1 - 3/22 - JFK/Beijing

Afternoon flight to Beijing. Fly trans-Pacific aboard a wide cabin jetliner. Cross the International Dateline.

Day 2 - 3/23 - Beijing

Arrive in Beijing, the Capital of China at 6:00pm.

Day 3 - 3/24 - Beijing

Visit Tiananmen Square, the largest square in the world, and the Temple of Heaven, built in 1420 AD. Sightseeing includes the Palace Museum, also known as the Forbidden City, home of 24 emperors with a total space of 9,999 rooms, and the Summer Palace, featuring Kunming Lake, Longevity Hill, Seventeen-Arch Bridge and Marble Boat.

Day 4 - 3/25 - Beijing

Excursion to the Great Wall, the 4,000-mile long and 2,000-year old structure. Visit the Ming Tombs, one of which is fully excavated and open for exploration. Roasted Beijing Duck Dinner.

Day 5 - 3/26 - Shanghai/Suzhou

Morning flight to Shanghai, followed by tour bus trip to Suzhou. Afternoon sightseeing to the centuries old Linger Garden, Tiger Hill and Hanshan Temple. Visit to the National Embroidery Institute showcasing the 1,000-year history of the silk embroidery craft. The evening wraps up with a dinner show featuring traditional Chinese music.

Day 6 - 3/27 - Suzhou/Hangzhou

Morning journey to Hangzhou with a visit to economic development zone. Explore the centuries old Lingyin Temple, one of the most famous Buddhist temples in China, featuring a 64.3 ft-high camphor wood carved Buddha.

Day 7 - 3/28 - Hangzhou/Shanghai

Morning boat cruise on West Lake with relaxing stopover at jewel-like pagodas and tea houses. Afternoon tour bus trip to Shanghai.

Day 8 - 3/29 - Shanghai

Sightseeing includes the Yu Garden, a maze of marvelous pavilions, ponds, and arching trees. Visit to the Bund, Shanghai's famous waterfront, featuring colonial buildings that once housed banks and trading houses from Britain, France, the US and Japan. Business visit to the Pudong economic development zone.

Day 9 - 3/30 Shanghai/Beijing/JFK

Morning flight to Beijing. Afternoon flight to JFK with 1:30pm arrival on the same day.

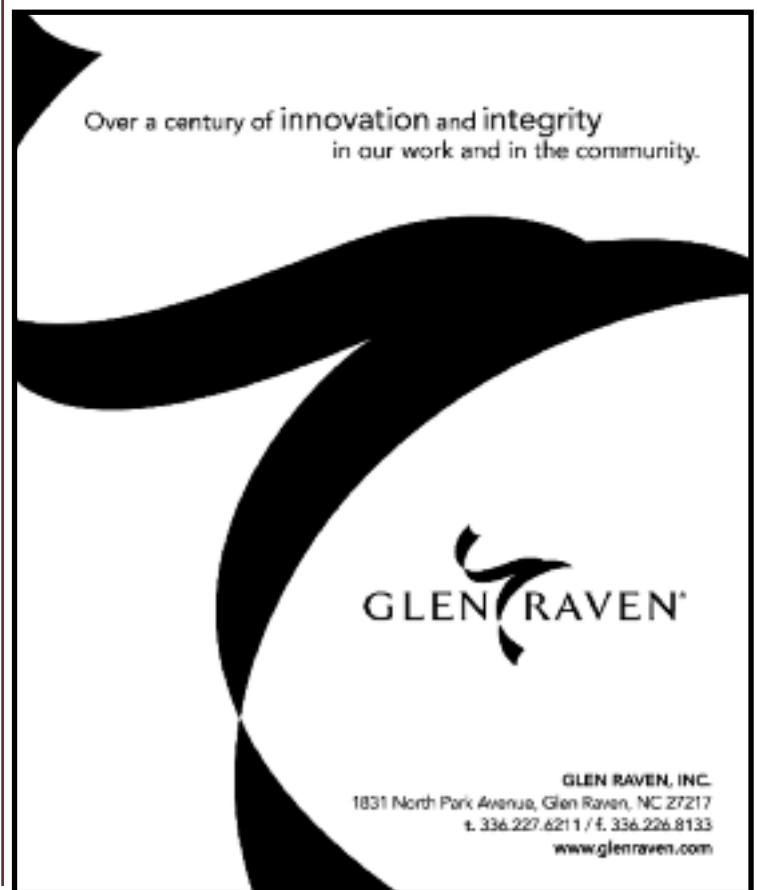
Itinerary subject to change.

March 22-30, 2012

\$2,199 per person*, includes:

- Round-trip international airfare
- 4 & 5 star hotel stays
- 3 meals each day
- All in-country transportation
- English-speaking tour guides
- Entrance fees for attractions

*Double occupancy required. This is a special chamber member rate, non-members add \$100.





Inaugural Chamber Clay Shoot a Success

Hosted by Beaver Pond Sporting Club in Snow Camp, members came together to network and show off their shooting skills at the inaugural Chamber Clay Shoot. Of the thirty shooters, the BB&T team came in 1st place. Congratulations to Perry Bullard, Tom Bobo, Jim Bryan, Mike Pittard, and Philip Smith. Thanks to Stout Stuart McGowen & King, LLP, for their presenting sponsorship, and all the other teams who came out for the event: BB&T, Carolina Bank, CenturyLink, YMCA/Profeet, and Piedmont Natural Gas.

We'd also like to extend a special thanks to Johnny Miller and his crew from Beaver Pond, for showing us such a great time! We can't wait for next year!



Mike Pittard of the winning BB&T team takes aim during the inaugural Chamber Clay Shoot.



One Size Does Not Fit All

Randolph Bank

Large or Small
We have a Business Checking account to fit your needs

3239 South Church Street, Burlington (336) 229-5338 **FDIC**

member to member BENEFITS

The Alamance County Area Chamber of Commerce **Member to Member Benefits** is a members-only service designed to benefit you and your employees. The Member to Member Benefits program provides employees with excellent discounts, services and benefits offered by a variety of chamber members. At the same time, it generates more business for members of the Alamance County Area Chamber of Commerce.

Do you have a benefit or discount you'd like to offer to other chamber members?

Please contact Melissa Oakes at melissaoakes@alamancechamber.com if you are interested.

Space is limited. Member to Member Benefits listed on a rotating basis.

Insurance Benefits

First Benefits Insurance



- Worker's compensation program for chamber members
- Designed to lower your workers' comp expenses
- Ability to coordinate insurance through your local agent
- Contact: Peg Pirrotta, 1-888-393-2667

Attractions Benefits

Wet N' Wild Emerald Pointe



- Discount online WaterPark tickets, May 1-September 5, 2011
- Adult (over 48") - Online Price: \$26 (regularly \$33.99)
- Child (under 48") - Online Price: \$18 (regularly \$22.99)
- Use Corporate Code online: 4503; Contact: Kerrie Brancazio, 1800-555-5900

Copiers & Equipment

Piedmont Digital Solutions



- 5% discount on all Xerox Phaser printers and printer supplies - free delivery
- Contact: Cathy Leary, 336-294-5557 or visit www.pds-x.com

Website Benefits

WebSpark Design



- Standard Small Business Site - \$2,300
- Small Business Site Redesign - \$1,800
- Premium Site Development Feature - 25% off additional feature when added to either option above
- Contact: Jennifer Busfield, 336-506-6131 or jennifer.busfield@websparkinc.com

Office Services

Vendswell



- Chamber members will receive 5% of all vending snack items free
- Chamber members will receive 10% off of all coffee and water services
- Contact: 336-227-8090 Website: www.vendswell.com

Catering Services

Mellow Mushroom



- Chamber members will receive 10% discount on all catering orders
- Delivery and set-up with minimum \$50 order
- Contact Mike Fox, General Manager, 336-584-1104

calendar OF EVENTS

JUNE 10 Business Before Hours -
Olde Forest Racquet Club
Date: Friday, June 10
Time: 7:30-9:00 a.m.
Location: 200 Pinedale Dr.
Elon
Cost: \$10

JUNE 14 Business Development Series -
Demystifying Search Engine
Optimization
Date: Tuesday, June 14
Time: 11:30 a.m.-1:00 p.m.
Location: Alamance Chamber
Cost: \$10, non-members \$15

JUNE 24 Chamber 101
Date: Friday, June 24
Time: 8:30-9:30 a.m.
Location: Alamance Chamber

JUNE 28 Business After Hours -
Saxapahaw Rivermill &
The Eddy
Date: Tuesday, June 28
Time: 5:30-7:00 p.m.
Location: 1715 Saxapahaw-
Bethlehem Church Rd.
Saxapahaw

JULY 8 Business Before Hours -
K & W Cafeteria
Date: Friday, July 8
Time: 7:30-9:00 a.m.
Location: 2629 Ramada Rd.
Burlington
Cost: \$10

JULY 12 Business Development Series -
The First 300 Seconds of a
Sales Call
Date: Tuesday, July 12
Time: 11:30 a.m.-1:00 p.m.
Location: Alamance Chamber
Cost: \$10, non-members \$15

JULY 29 Chamber 101
Date: Friday, July 29
Time: 8:30-9:30 a.m.
Location: Alamance Chamber

JULY 26 Business After Hours -
ACE Speedway
Date: Tuesday, July 26
Time: 5:30-7:00 p.m.
Location: 3401 Altamahaw Race
Track Rd.
Elon

AUGUST 12 Business Before Hours -
Mimi's Cafe
Date: Friday, August 12
Time: 7:30-9:00 a.m.
Location: 3111 Waltham Blvd.
Burlington
Cost: \$10

AUGUST 26 Chamber 101
Date: Friday, August 26
Time: 8:30-9:30 a.m.
Location: Alamance Chamber

AUGUST 30 Business After Hours -
Simpy Thai & Sushi Bar
Date: Tuesday, August 30
Time: 5:30-7:00 p.m.
Location: 2041 Timberline Station Dr.
Elon



SAVE THE DATE
Educator Appreciation Expo
Friday, August 19



Shooters take a break at May's Chamber Clay Shoot.



Affordable Professional Development

Providing quality programming and networking opportunities to the business community since 2003.



Women's Resource Center

in Alamance County

2011-2012 Dates

Aug 24 • Sept 28
Oct 26 • Nov 30
Jan 25 • Feb 22
Mar 28 • Apr 25
May 23 • June 27

The 2011-2012 Working Women's Wednesday series is made possible through the Major Corporate Sponsorship of **Alamance County Area Chamber of Commerce, Alamance Regional Medical Center, Davenport, Marvin, Joyce & Co., LLP, Gilliam Coble & Moser, LLP, Rock Your Technology, LLC., and the Times News.**

Other corporate sponsors include Ameriprise Financial Services, Inc., Applied Copier Concepts, Burlington Manor, Carolina Bank, Cindy Dudley-REALTOR/Broker-Keller Williams, Glen Raven, Inc., Diane Heath-Independent Consultant for Rodan & Fields, Home Instead Senior Care, Kernodle Clinic, Olde Forest Racquet Club, Sharp Business Solutions, Solgarden, STOUT STUART MCGOWEN & KING, LLP, The Anderson Center for Marriage and Family Therapy, VantageSouth Bank and Wishart Norris Henninger & Pittman, PA Attorneys and Counselors at Law. Please thank them! We appreciate their support.

To learn more about becoming a sponsor call the WRC at 227-6900.

Working Women's Wednesdays has brought dynamic speakers and proven leaders to Alamance County for the past eight years. Dates and speaker announcements will be sent through the Women's Resource Center email list. Don't miss the opportunity to hear from fascinating women of leadership, creativity and vision.

Our meetings are held from 11:30am to 1:00pm over lunch at Alamance Country Club.

Individual meeting reservations are \$25 for Women's Resource Center members and \$30 for non-members. Prepaid reservations are required to attend WWW and must be made by the Friday preceding the luncheon date.

To register, visit www.wrcac.org where you can use PayPal to easily make your reservation.

BEST VALUE-purchase the entire series for only \$225 for all 10 luncheons



At Capital Bank, we pride ourselves on reaching out to our communities. We live and work right beside you and share your commitment to hometown values.

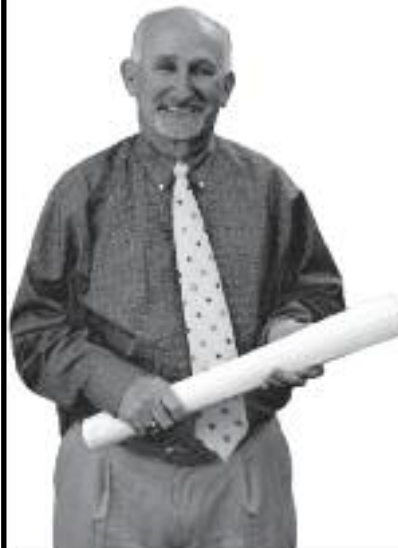
Stop by and get to know us today.

Burlington: 445 S. Main St. | 3466 S. Church St. | 503 Huffman Mill Rd.
Graham: 227 S. Main St. | Mebane: 102 E. Washington St.

capitalbank.us.com | 800.308.3971



He loves apartment living.



Alton Tew and the Samet Housing Group have built apartment complexes, assisted living facilities, and mixed-use developments throughout North Carolina and beyond. For your next multi-unit housing project, Alton and his team are the right choice.

Alton Tew
Housing Group Manager

336.544.2645 | atew@sametcorp.com



Building Structures. Building Relationships.

309 Gallimore Dairy Road, Suite 102
Greensboro, NC 27409
336.544.2600 | www.sametcorp.com